

Scan for more information

PA-08

User Manual

Table of Contents

Specifications.....	3
Dimensions.....	4
Speed/Current vs Load.....	5
Mounting Brackets.....	6
Connectors.....	7
Internal Components.....	8
Internal Descriptions.....	9

Have any queries? Our expert engineers are here to help!



sales@progressiveautomations.com



1-800-676-6123



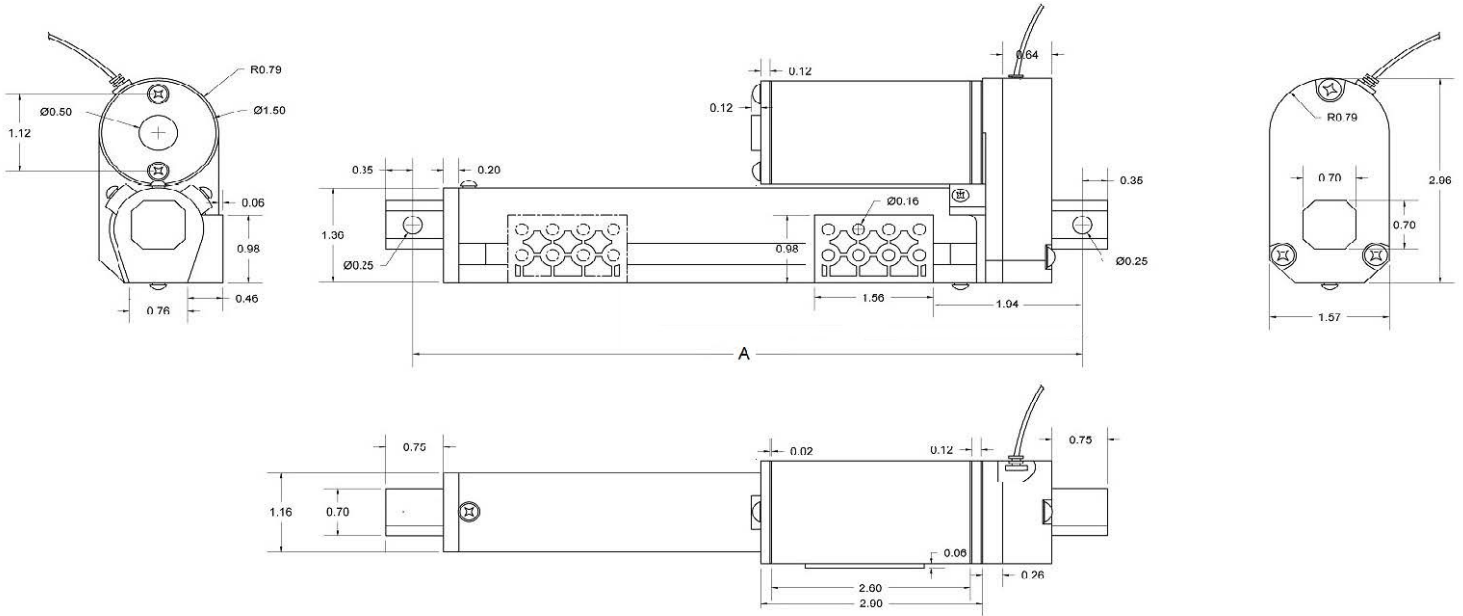
progressiveautomations.com

Specifications

Load (LBS)		No Load Current (A)				Full Load Current (A)				Speed (inch/sec)	
Dynamic	Static	12VDC	24VDC	36VDC	48VDC	12VDC	24VDC	36VDC	48VDC	No Load	Full Load
50	100	1.0	0.5	0.3	0.2	5.0	2.5	1.6	1.25	1.18	0.94
75	150	1.0	0.5	0.3	0.2	5.0	2.5	1.6	1.25	0.95	0.70
110	220	1.0	0.5	0.3	0.2	5.0	2.5	1.6	1.25	0.79	0.59

Stroke	1" to 40"
Limit Switch	Internal - Non-Adjustable
Limit Switch Feedback	Customizable
Screw Type	ACME Screw
Motor Type	Brushed or Brushless DC Motor
Connector Type	See Page 7
Wire Length	40" (customizable)
Housing Material	6062 Aluminum Alloy
Rod Material	Powder Metallurgy Steel Alloy
Gear Material	Polyformaldehyde
Color (Shaft)	Silver
Color (Motor End)	Silver
Noise	<60dB
Duty Cycle	25% (5 minutes on, 15 minutes off)
Operational Temperature	-20°C to 65°C (-4°F to 149°F)
Protection Class	IP20
Feedback Options	Potentiometer (see Page 6)
Certifications	CE/RoHS
Mounting Brackets	See Page 6
Mounting Ends	Customizable

Dimensions



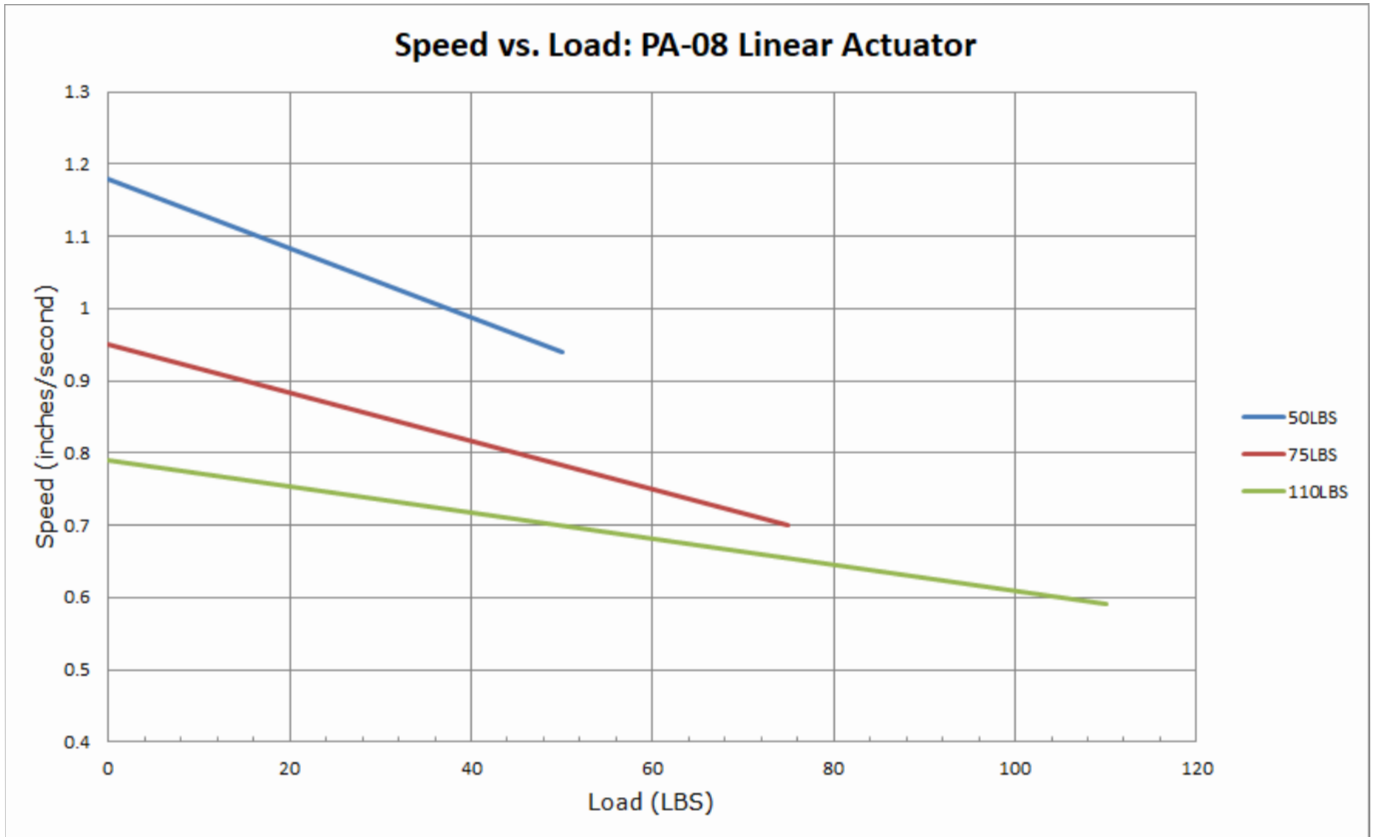
Hole to Hole

PA-08	Stroke	1	2	3	4	6	8	9	10	12	14	16	18	20	22	24	30	40
	A	5.61	6.61	7.61	8.61	10.61	12.61	13.61	14.61	16.61	18.61	20.61	22.61	24.61	26.61	28.61	34.61	44.61

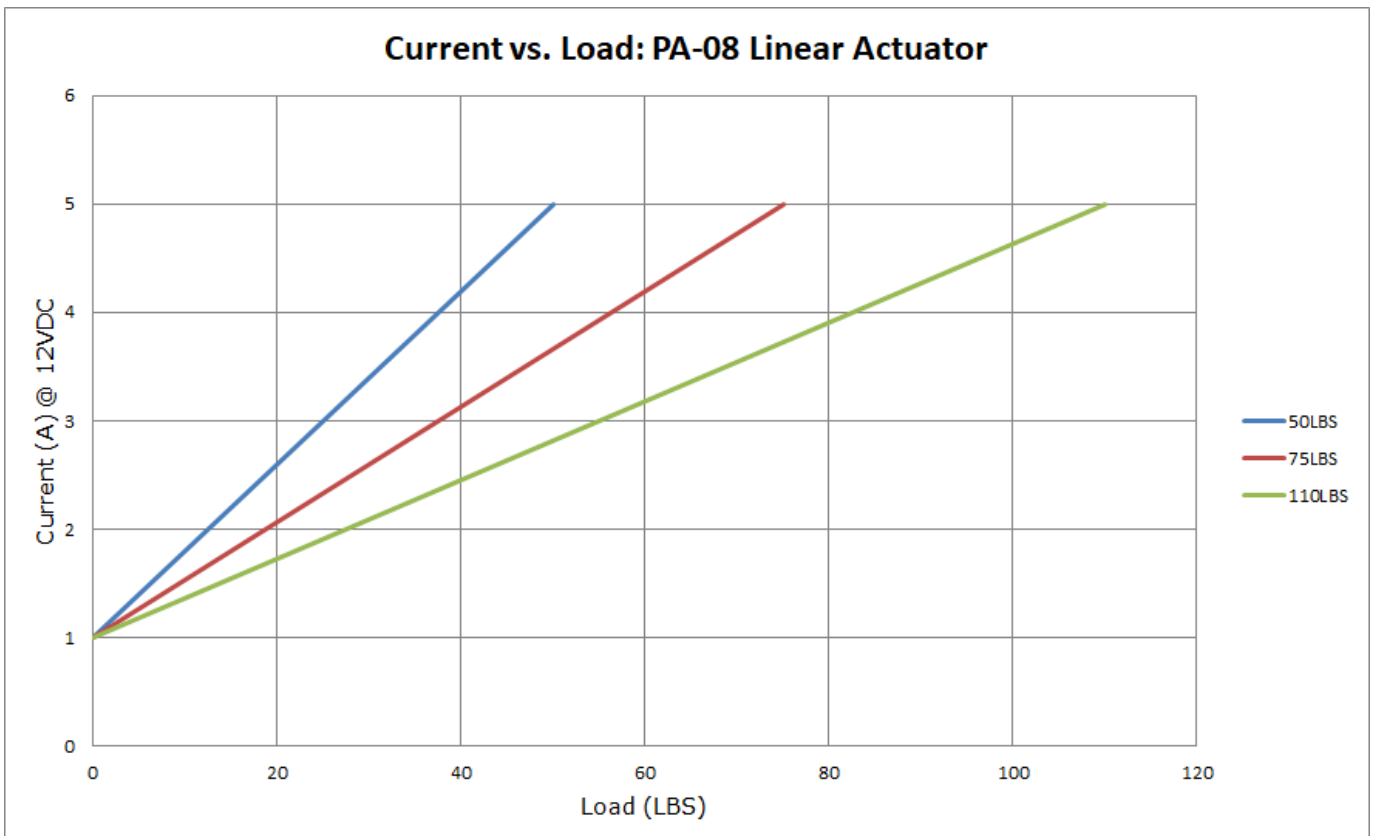
For Stroke Length 1" to 40"

$A = \text{Stroke length} + 4.61''$

Speed vs Load

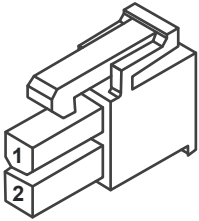


Current vs Load



Connectors

2-Pin Connector (Standard)

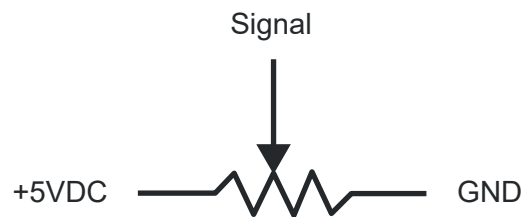


Motor	
1	2
M-	M+

Component	Part Name	Part Number	Mating Part Number
Housing	Molex Mini Fit Jr 2-Pin Receptacle	39-01-2025	39-01-2029 /39-01-2026
Terminal	Molex Mini-Fit Jr. Female Terminal	39-00-0038	39-00-0040

Potentiometer Specifications

*For Stroke Length up to 40"



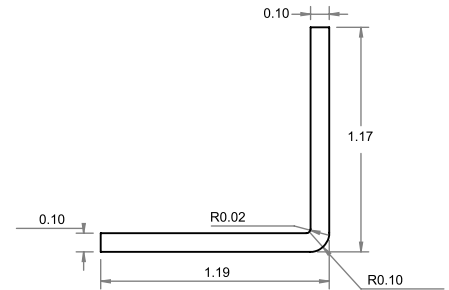
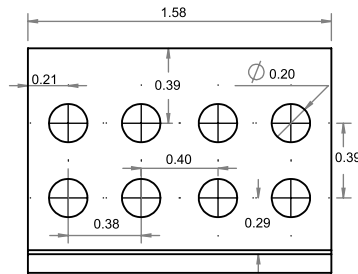
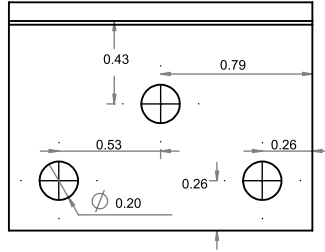
Resistance	Number of Turns	Tolerance
0-10k Ω	10	+/- 5%

*Actual resistance value may vary within the 0-10k Ω range based on stroke length

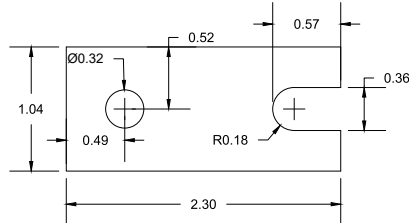
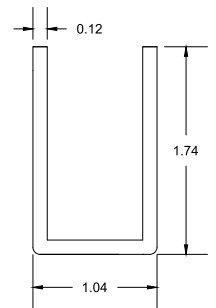
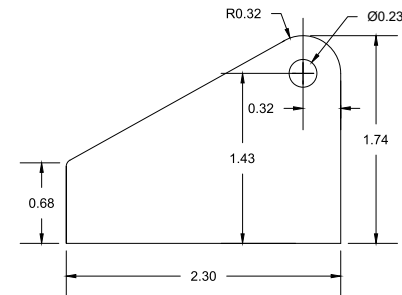
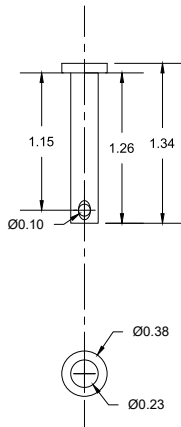
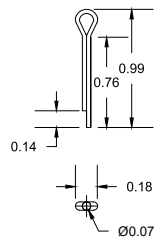
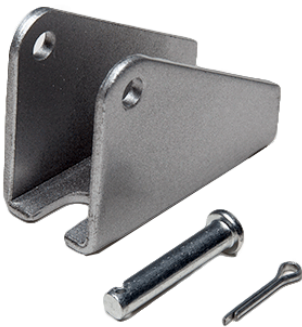
Mounting Brackets

(Dimensions in inches)

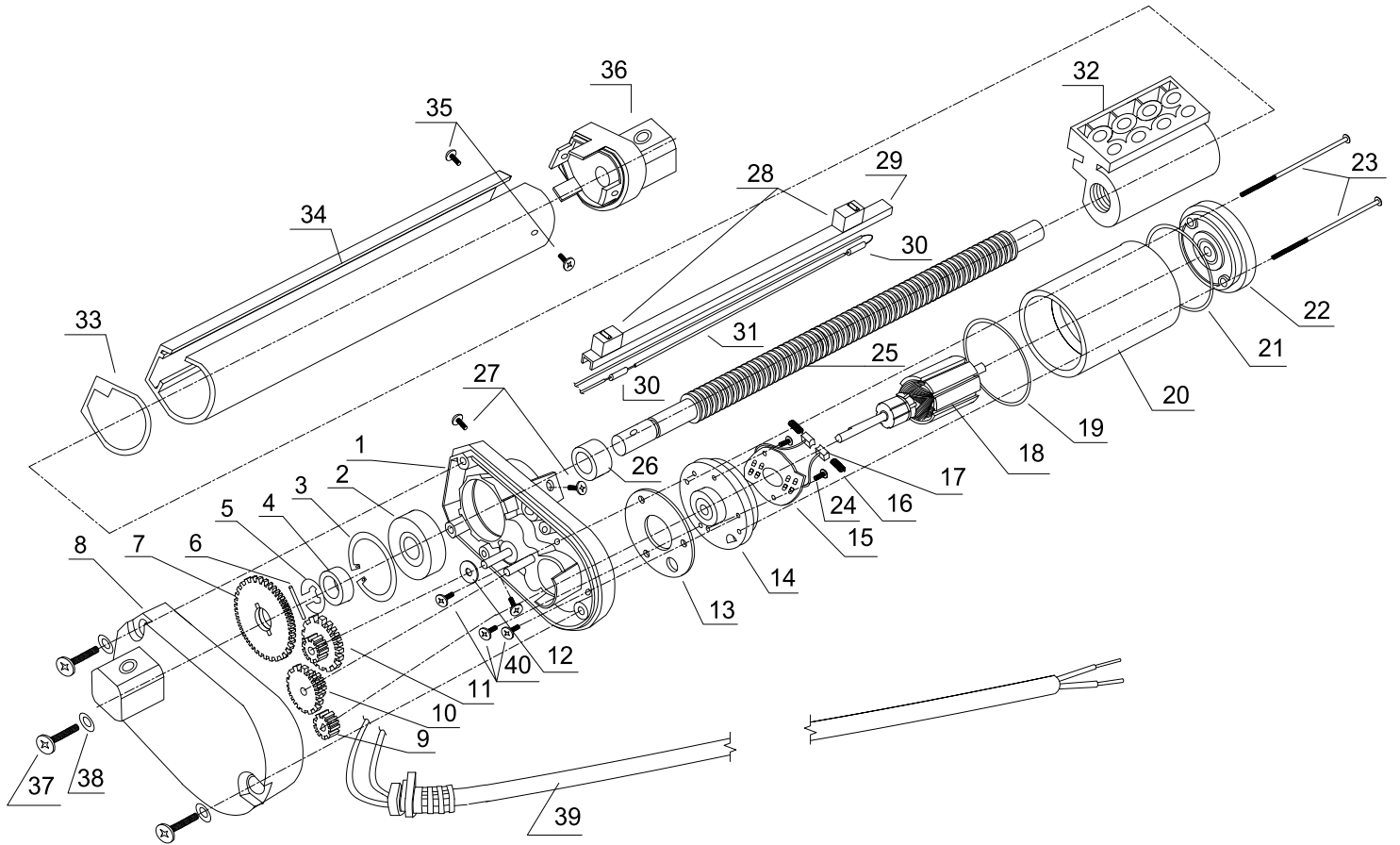
BRK-08



BRK-14



Internal Components



Internal Descriptions

Item	Description	Qty
1	Actuator base	1
2	Shaft Bearing	1
3	Shaft Bearing Lock Ring	1
4	Shaft Base Spacer	1
5	Shaft Base Spacer Snap Ring	1
6	Shaft Gear Wheel Holder	1
7	Shaft Gear Wheel	1
8	Base Cover with Mounting Support	1
9	Motor Gear Wheel	1
10	Small Intermediate Gear Wheel	1
11	Medium Intermediate Gear Wheel	1
12	Teflon Washer	1
13	Electric Motor Base Washer	1
14	Electric Motor Base With Bearing	1
15	Brush Holder PCB	1
16	Electric Motor Brush Spring	2
17	Electric Motor Brush	2
18	Electric Motor Rotor	1
19	Motor Enclosure Bottom Gasket	1
20	Electric Motor Encloser with Stator	1

Item	Description	Qty
21	Electric Motor Top Gasket	1
22	Electric Motor Cap with Rotor Bearing	1
23	Motor Enclosure Screw	2
24	Brush Holder PCB Screw	2
25	Treaded Shaft Drive / Lead Screw	1
26	Shaft Spacer	1
27	Shaft Enclosure Base Screw	3
28	Limit Switch	2
29	Limit Switches Base	1
30	Diode	2
31	Limit Switches Wiring	1
32	Shaft	1
33	Shaft Encloser Bottom Gasket	1
34	Shaft Encloser	1
35	Shaft Eclosure Cap Screw	2
36	Shaft Eclosure Cap with Mounting Hole	1
37	Base Cover Screw	3
38	Base Cover Screw Washer	3
39	Power Cable	1
40	Electric Motor Base Screw	3